

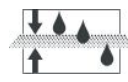
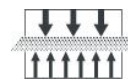
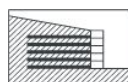
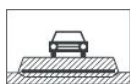
Informatii produs

Descriere produs:

Geotextilul KORTEX® GT este fabricat din fire de mare tenacitate de PET (poliester).

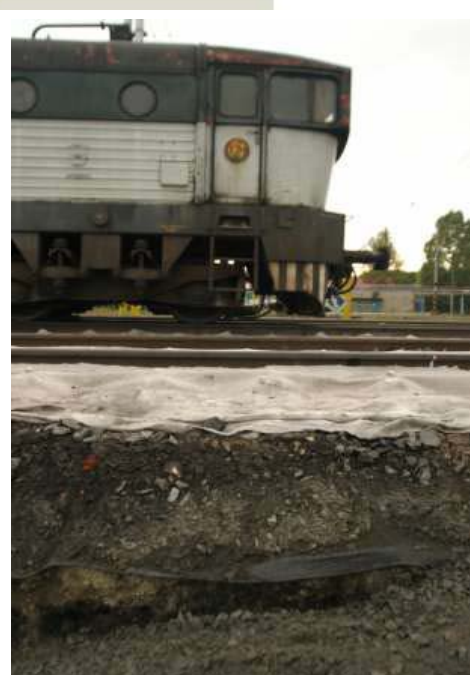
Geotextilul KORTEX® GT este de tipul tesut, ceea ce ofera o larga varietate in domeniile de utilizare, printre care cele mai uzuale pentru intarirea solurilor, separare si filtrare.

GEOTEXTILE TESUTE KORTEX® GT



Aplicatii:

- Intarirea terasamentelor pt drumuri, parcuri, cai ferate si aeroporturi
- Fundatii ale terasamentelor
- Intarirea umpluturilor si solurilor, suprafete industriale, hale si centre comerciale
- Pereti de sustinere
- Reparatii ale drumurilor
- Stabilizarea malurilor de larguri oceanice si mari, raurilor
- Intarirea oricarui tip de sol ce are o fundatie instabila.



Date tehnice geotextilului tesut KORTEx® GT:

	Rezistenta la rupere MD	toleranta	Rezistenta la rupere CMD	toleranta	Alungirea la rupere MD	toleranta	Alungirea la rupere CMD	toleranta	Mod de livrare	Latimea standard de livrare	Lungimea de livrare stabdard	Suprafata rola
	kN/m		kN/m		%		%			m	m	
35/35	40	-5	40	-5	9	±2	9	±2	rola	4.5	100	450
50/50	55	-5	55	-5	9	±3	9	±3				
70/70	80	-10	80	-10	9	±2	9	±2				
80/80	90	-10	90	-10	9	±3	9	±3				
100/50	110	-10	55	-5	10	±2	10	±2				
100/50	105	-5	52.5	-2.5	10	±2	10	±2				
100/100	110	-10	110	-10	10	±2	9	±2				
120/120	130	-10	130	-10	10	±2	10	±3				
150/50	160	-10	55	-5	11	±3	10	±2				
150/150	160	-10	160	-10	10	±2	10	±2				
200/50	220	-20	55	-5	10	±2.5	10	±2.5				
200/50	210	-10	52.5	-2.5	10	±2	10	±2				
200/200	220	-20	220	-20	10	±3	10	±3				
300/50	330	-30	55	-5	11	±2.5	10	±2				
300/100	330	-30	110	-10	13	±3	11	±3.5				
300/300	330	-30	330	-30	11	±3	10	±3				
400/50	440	-40	55	-5	12	±3	11	±3				
500/50	550	-50	55	-5	13	±2	11	±2				
500/100	550	-50	110	-10	13	±2	11	±2				
600/50	660	-60	55	-5	11	±4	10	±2.5				
600/100	660	-60	110	-10	9	±2	9	±2				
800/50	880	-80	55	-5	12	±4	11	±4				
800/100	880	-80	110	-10	10	±2.5	10	±2.5				
1000/50	1100	-100	55	-5	9	±3	9	±3				
1000/100	1100	-100	110	-10	10	±3	9.5	±2				
1250/100	1350	-100	110	-10	9	±2	11	±2				

Transport si depozitare:

Geotextilul KORTEx® GT se transporta cu mijloace de transport curate, acoperite, ferite de umezeala si murdarie.

Depozitarea se face in spatii inchise sau deschise, max.5 straturi deasupra unei role.

A se feri de foc!

KORTEx® GT este o marca inregistrata a KORDARNA a.s.