

GEOTEXTILE TESUTE KORTEX® GTPP

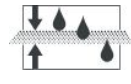
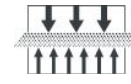
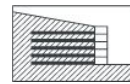
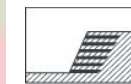
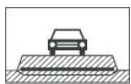
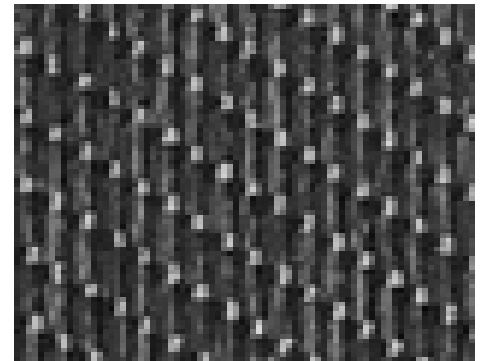
Informatii produs

Descriere produs:

Geotextilul KORTEX®GTPP este fabricat din fire de mare tenacitate de PP (polipropilena).

Geotextilul KORTEX®GTPP este de tipul tesut, ceea ce ofera o larga varietate in domeniile de utilizare, printre care cele mai uzuale pentru intarirea solurilor, separare si filtrare.

Are o rezistenta chimica foarte mare la pamanturi foarte acide si alcalice (pH 0-14).



Aplicatii:

- Intarirea terasamentelor pt drumuri, parcuri, cai ferate si aeroporturi
- Fundatii ale terasamentelor
- Intarirea umpluturilor si solurilor, suprafete industriale, hale si centre comerciale
- Pereti de sustinere
- Reparatii ale drumurilor
- Stabilizarea malurilor de larguri oceanice si mari, raurilor
- Intarirea oricarui tip de sol ce are o fundatie instabila.



Date tehnice geotextilului tesut KORTEx®GTPP:

	Rezistenta la rupere MD	toleranta	Rezistenta la rupere CMD	toleranta	Alungirea la rupere MD	toleranta	Alungirea la rupere CMD	toleranta	Mod de livrare	Latimea standard de livrare	Lungimea de livrare stabdard	Suprafata rola
	kN/m		kN/m		%		%			m	m	m2
14/14	17	-3	16	-2	18	±4.5	13	±4	rola	max. 4.5	100 sau 200	max. 450
14/14	16	-2	16	-2	18	±4	14	±3				
18/12	19	-1	12	-1	18	±4.5	13	±4				
18/18	21	-3	21	-3	17	±3.5	12	±4				
21/22	22	-1	23	-1	17	±4	10	±4				
25/25	30	-5	30	-5	17	±3.5	9	±4				
25/25	28.5	-3.5	28.5	-3.5	17	±3.5	11	±2.5				
30/30	35	-5	35	-5	15	±4	10	±3				
40/40	45	-5	45	-5	16	±4.5	9	±4				
50/50	55	-5	55	-5	15	±3	9	±3				
60/60	65	-5	65	-5	14	±3	8	±3				
70/70	80	-10	80	10	14	±4	9	±4				
80/80	90	-10	90	-10	15	±4	9	±4				
100/100	110	-10	110	-10	12	±4	9	±3				
120/120	130	-10	130	-10	8	±3	7	±3				
150/50	160	-10	55	-5	17	±3	10	±3				
150/100	160	-10	110	-10	18	±3	10	±3				
200/50	220	-20	55	-5	16	±4	8	±3				
200/100	220	-20	110	-10	18	±3	9	±3				
270/60	270	-10	65	-5	9	±2	12	±3				
320/50	350	-30	55	-5	12	±3	11	±3				

Transport si depozitare:

Geotextilul KORTEx®GTPP se transporta cu mijloace de transport curate, acoperite, ferite de umezeala si murdarie.

Depozitarea se face in spatii inchise sau deschise, max.5 straturi deasupra unei role.

A se feri de foc!

KORTEx®GTPP este o marca inregistrata a KORDARNA a.s.

GEOSINTEX